

# Cashbuild



get credit of up to **R500 000**

Apply now at [cashbuild.co.za](http://cashbuild.co.za)  
T's and C's apply



QUALITY BUILDING MATERIALS, TOOLS, PAINT AND HARDWARE AT THE LOWEST PRICES

# EASTER SPECIALS

CASHBUILD KIRKWOOD SPECIALS

Prices valid 21 March to 30 April 2025

31 Harrod Street, Kirkwood • Tel: 042 230 0359



## RYOBI POWER TOOLS

**RYOBI CORDLESS SCREWDRIVER HANDYLINE 3.6V**  
SKU: 324360



**199<sup>95</sup>**

**RYOBI IMPACT DRILL HANDYLINE 10mm 550W** SKU: 324361



**419<sup>95</sup>**



**RYOBI ANGLE GRINDER HANDYLINE 115mm - 650W**  
SKU: 324362

**419<sup>95</sup>**



**RYOBI ANGLE GRINDER 230mm - 2000W**  
SKU: 324366

**1519<sup>95</sup>**



**RYOBI ORBITAL SANDER HANDYLINE 150W**  
SKU: 324365

**419<sup>95</sup>**



**RYOBI JIGSAW HANDYLINE 400W** SKU: 324363

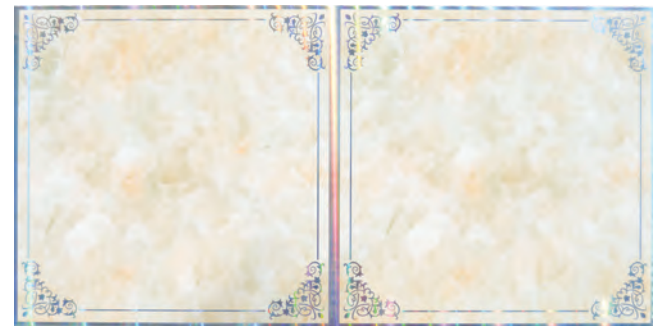
**419<sup>95</sup>**



**RYOBI CIRCULAR SAW HANDYLINE 185mm - 1250W**  
SKU: 324364

**969<sup>95</sup>**

## CEILING



**PVC CEILING FLOURISH 6mm x 300mm x 3.9m**  
SKU: 315493

**79<sup>95</sup>**

**PVC CEILING GREY BARK 6mm x 300mm x 3.9m**  
SKU: 324341



**79<sup>95</sup>**

## CEMENT



**CEMENT PPC SUREBUILD 42.5N 50Kg**  
SKU: 351



**CEMENT CEMZA 32.5 50Kg**  
SKU: 308172



**CEMENT CEMZA 42.5 50Kg**  
SKU: 308271

PLEASE ENQUIRE IN-STORE ON BRAND AVAILABILITY AND PRICE

## Introducing Zakhelikhaya

Your opportunity to build your dream home with a variety of house plans!



Enquire in your nearest Cashbuild store



**TRADING HOURS:** Mon - Fri: 07:00 - 18:00 • Sat: 07:00 - 16:00 Sun: 08:00 - 14:00 • Public Holiday: 08:00 - 15:00

[cashbuild.co.za](http://cashbuild.co.za)  
SHARECALL 0860 100 582

268 STORES IN SOUTHERN AFRICA & EXPANDING

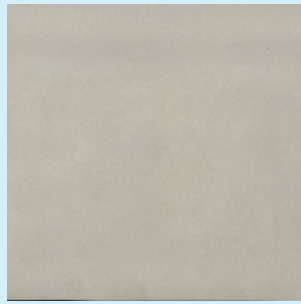
1



# TILES & TILE ACCESSORIES



**PORCELAIN TILE**  
CARARA  
POLARIS  
60x60 1.44m<sup>2</sup>  
SKU: 324757  
**145<sup>95</sup>** p/m<sup>2</sup>



**PORCELAIN TILE**  
PLAIN IVORY  
60x60 1.44m<sup>2</sup>  
SKU: 324759  
**145<sup>95</sup>** p/m<sup>2</sup>



**PORCELAIN TILE**  
MILANO GREY  
40x40 1.44m<sup>2</sup>  
SKU: 324754  
**145<sup>95</sup>** p/m<sup>2</sup>



**PORCELAIN TILE**  
MOROCCAN  
SKY 60x60  
1.44m<sup>2</sup>  
SKU: 324755  
**145<sup>95</sup>** p/m<sup>2</sup>



**EZEE TILE**  
PORCELAIN  
TILE  
ADHESIVE  
20Kg  
SKU: 303811  
**107<sup>95</sup>**



**EZEE TILE**  
ADHESIVE  
PREMIUM  
20Kg  
SKU: 303384  
**64<sup>95</sup>**



**EZEE TILE**  
ADHESIVE  
CONTRACTOR  
20Kg  
SKU: 628569  
**49<sup>95</sup>**



**EZEE TILE**  
LIGHT  
GREY  
GROUT  
5Kg  
SKU: 306022  
**57<sup>95</sup>**



**EZEE TILE**  
BOND IT  
5L  
SKU: 601035  
**122<sup>95</sup>**

## LOCKS & LOCKSETS



**SAMSON**  
GATE WHEEL V 80mm SET  
SKU: 322725  
**339<sup>95</sup>**



**SAMSON LOCKSET**  
KEY 2L SABS  
6IN HANDLE CP  
SKU: 322179  
**149<sup>95</sup>**



**LOCKSET 3L**  
FORT KNOX  
CHROME  
PLATED  
SKU: 313460  
**119<sup>95</sup>**

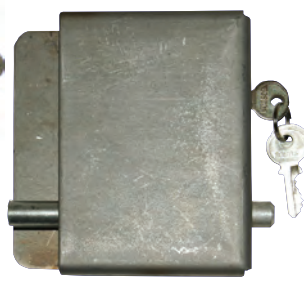
**LOCKSET**  
FORT KNOX  
2L CP  
SKU: 313456  
**99<sup>95</sup>**



**FORT KNOX**  
LOCKSET 2L  
POLYPROP  
C/P HANDLE  
SKU: 303048  
**82<sup>95</sup>**



**SAMSON HEAVY**  
DUTY GATE LOCK  
WITH PADLOCK  
SKU: 323087  
**184<sup>95</sup>**



**ULTRA LOCK**  
SMALL  
SKU: 324142  
**249<sup>95</sup>**

## PLUMBING



**PISCES**  
CONCEALED  
SHOWER/  
BATH MIXER  
SKU: 314565  
**442<sup>95</sup>**



**POLYCOPE**  
PIPE  
22mm p/m  
SKU: 314397  
**9<sup>95</sup>**



**VALVE BALL**  
LEVER FXF  
15mm  
SKU: 305775  
**144<sup>95</sup>**



**MONTALE**  
BRASS BIB  
TAP 3/4" x 3/4"  
SKU: 323831  
1/2" x 3/4"  
SKU: 323830  
**139<sup>95</sup>**



**PAN**  
CONNECTOR  
FLEXIBLE  
SKU: 314408  
**94<sup>95</sup>**



**THREAD**  
TAPE  
PTFE  
SKU: 54635  
**16<sup>95</sup>**

## HOME

**JUMBO WET MOP**  
+ HANDLE  
SKU: 302581  
**114<sup>95</sup>**



Ready to renovate?



Get credit of up to  
**R500 000**

NOW YOU CAN

Apply at [cashbuild.co.za](http://cashbuild.co.za)  
T's and C's apply





## WOODEN AND ALUMINIUM DOORS



**DOOR DEEP MOULDED 2 PANEL**  
SKU: 211403  
**504<sup>95</sup>**



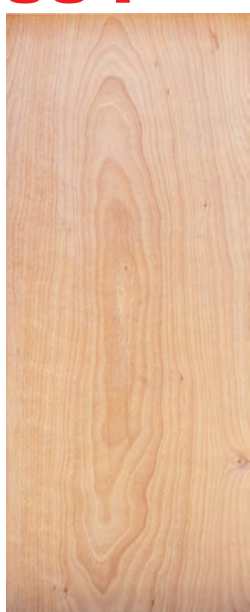
**DOOR DEEP MOULDED 6 PANEL** SKU: 211404  
**504<sup>95</sup>**



**DOOR DEEP MOULDED 4 PANEL**  
SKU: 211405  
**499<sup>95</sup>**



**DOOR PINE SOLIDOR/BB A GRADE** SKU: 21605  
**989<sup>95</sup>**



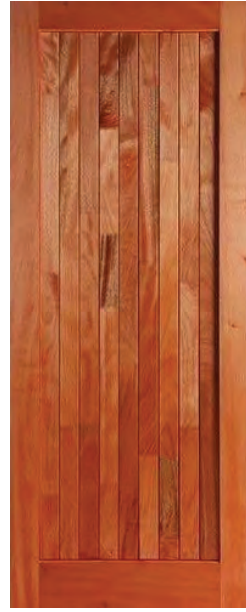
**DOOR PRINT HARDBOARD E/E** SKU: 211  
**419<sup>95</sup>**



**DOOR WOOD HARDBOARD**  
SKU: 212  
**349<sup>95</sup>**



**DOOR WOODEN 8 PANEL FLAT**  
SKU: 218102  
**1049<sup>95</sup>**



**DOOR MIXED TIMBER F&L OPEN BACK**  
SKU: 302221  
**1569<sup>95</sup>**



**DOOR ALUMINIUM HINGE CLADDED FULL ECO BRONZE**  
SKU: 322949  
**4239<sup>95</sup>**



**DOOR ALUMINIUM HINGE EXQUISITE STABLE ECO BRONZE**  
SKU: 322951  
**6584<sup>95</sup>**



**DOOR ALUMINIUM HINGE CLADDED STABLE ECO BRONZE**  
SKU: 322950  
**4489<sup>95</sup>**



## GRINDING DISCS



**CUTTING DISC MULTI PURPOSE**  
115mm x 1mm x 22.2mm  
SKU: 307644 **25<sup>95</sup>**



**CUTTING DISC STEEL & STAINLES STEEL**  
115mm x 1mm x 22.2mm  
SKU: 307642 **13<sup>95</sup>**



**CUTTING DISC STEEL & STAINLES STEEL**  
230mm x 3mm x 22.2mm  
SKU: 307646 **43<sup>95</sup>**



**DIAMOND BLADE SEGMENTED STD**  
230mm x 22.23mm  
SKU: 307651 **164<sup>95</sup>**



**DIAMOND BLADE CONTINUOUS RIM** 115mm x 22.23mm  
SKU: 307649 **49<sup>95</sup>**



**DIAMOND BLADE SEGMENTED STD**  
115mm x 22.23mm  
SKU: 307650 **54<sup>95</sup>**

## WATER TANKS



**AFRICA TANK WATER TANK - 2500L**  
SKU: 315545  
**2199<sup>95</sup>**

**AFRICA TANK WATER TANK - 5000L**  
SKU: 315546  
**5499<sup>95</sup>**

**FREE LOCAL DELIVERY**



**FOR FURTHER DISTANCES ENQUIRE IN-STORE.**

The advertised rates are estimate rates and are subject to change if the road conditions vary and if areas are not accessible. Handling fee applies to bricks, blocks, concrete rooftiles and cement. Enquire in-store for details.



# PAINT AND PAINT ACCESSORIES



**MACKAY CONTRACTOR PVA 20L**  
 WHITE SKU: 323274  
 CREAM SKU: 323276  
 PEACH SKU: 323280  
 CHARCOAL SKU: 323284  
 LIGHT GREY SKU: 323278  
**254<sup>95</sup>**



**MACKAY PLASTER PRIMER WATER BASED 20L WHITE**  
 SKU: 323294  
**514<sup>95</sup>**



**PAINT ROLLER TRAY SET EEZYPILE**  
 SKU: 301825

**109<sup>95</sup>**



**PAINT TRAY SET ECOPILE 225mm**  
 SKU: 637611

**62<sup>95</sup>**



**DURAM - 20L ARMAGUARD DEEP FOSSIL**  
 SKU: 321627  
**MIDNIGHT SHADOW**  
 SKU: 321629  
**929<sup>95</sup>**



**DURAM - 20L ROOFKOTE BURGANDY**  
 SKU: 301924  
**CHARCOAL**  
 SKU: 301367  
**989<sup>95</sup>**



**DURAM - 20L WALL & CEILING WHITE**  
 SKU: 301945  
**989<sup>95</sup>**



**DURAM - 20L ARMATEX ASH**  
 SKU: 307742  
**GREYSTONE**  
 SKU: 307734  
**LINDEN WOOD**  
 SKU: 305731  
**SIENNA** SKU: 305733  
**WHEAT FIELD**  
 SKU: 305735  
**849<sup>95</sup>**



**WORKTIME ROLLER TRAY SET**  
 SKU: 307685

**79<sup>95</sup>**



**PAINT BRUSH BEE 75mm**  
 SKU: 301811

**57<sup>95</sup>**

**EXTENSION POLE 2.5m**  
 SKU: 301822

**112<sup>95</sup>**

**PAINT ROLLER EEZYPILE 225mm**  
 SKU: 632005

**87<sup>95</sup>**



**FAT ROLLER 60mm**  
 SKU: 304788

**172<sup>95</sup>**



**MELODY PVA - 20L WHITE**  
 SKU: 300002

**284<sup>95</sup>**



**MEDAL - 20L WALLS & CEILINGS LUSH LATTE**  
 SKU: 306130  
**WHITE** SKU: 306132

**719<sup>95</sup>**



**MEDAL - 5L WALLS & CEILINGS WHITE**  
 - 306131

**219<sup>95</sup>**



**SAFARI GLOSS ENAMEL WHITE - 5L**  
 SKU: 301477

**349<sup>95</sup>**

## FASTENERS



**CUT SCREW SMOOTH SHANK YP 4.0 x 75mm Q150**  
 SKU: 308657

**222<sup>95</sup>**

**NAIL ROOF & SEAL 90 x 5.0mm QTY100**  
 SKU: 304303

**99<sup>95</sup>**

**NAIL MASON FLUTED FLAT 75 x 3.5mm 1Kg**  
 SKU: 304266

**194<sup>95</sup>**



**DRYWALL SCREW COURSE THREAD 3.5 x 25mm #6Q 900**  
 SKU: 305926

**239<sup>95</sup>**



**ROD THREADED 12mm x 1m**  
 SKU: 300811

**57<sup>95</sup>**

## GLASS

**GLASS 3mm CLEAR**

1830 x 1070 SKU: 8162

1830 x 1220 SKU: 8163

1830 x 900 SKU: 8161

**318<sup>95</sup>**  
**392<sup>95</sup>**  
**261<sup>95</sup>**



**FREE LOCAL DELIVERY**



**FOR FURTHER DISTANCES ENQUIRE IN-STORE.**

The advertised rates are estimate rates and are subject to change if the road conditions vary and if areas are not accessible. Handling fee applies to bricks, blocks, concrete roof tiles and cement. Enquire in-store for details.

**CB Kirkwood Delivery Rates:**

Local Zone R0	0km-5km
Zone 1	R700 5km-20km
Zone 2	R1200 20km-50km
Zone 3	R1500 50km-70km
Zone 4	R2000 70km-100km

BECOME A



**WIN AIRTIME, GET EXCLUSIVE DEALS, AND SAVE!**  
 Give your cellphone number to the Cashier at any Cashbuild store when you pay.

**TRADING HOURS:**

Monday - Friday: 07:00 - 18:00  
 Saturday: 07:00 - 16:00  
 Sunday: 08:00 - 14:00  
 Public Holiday: 08:00 - 15:00

**Cashbuild KIRKWOOD:**  
 31 Harrod Street,  
 Kirkwood  
 Tel: 042 230 0359